

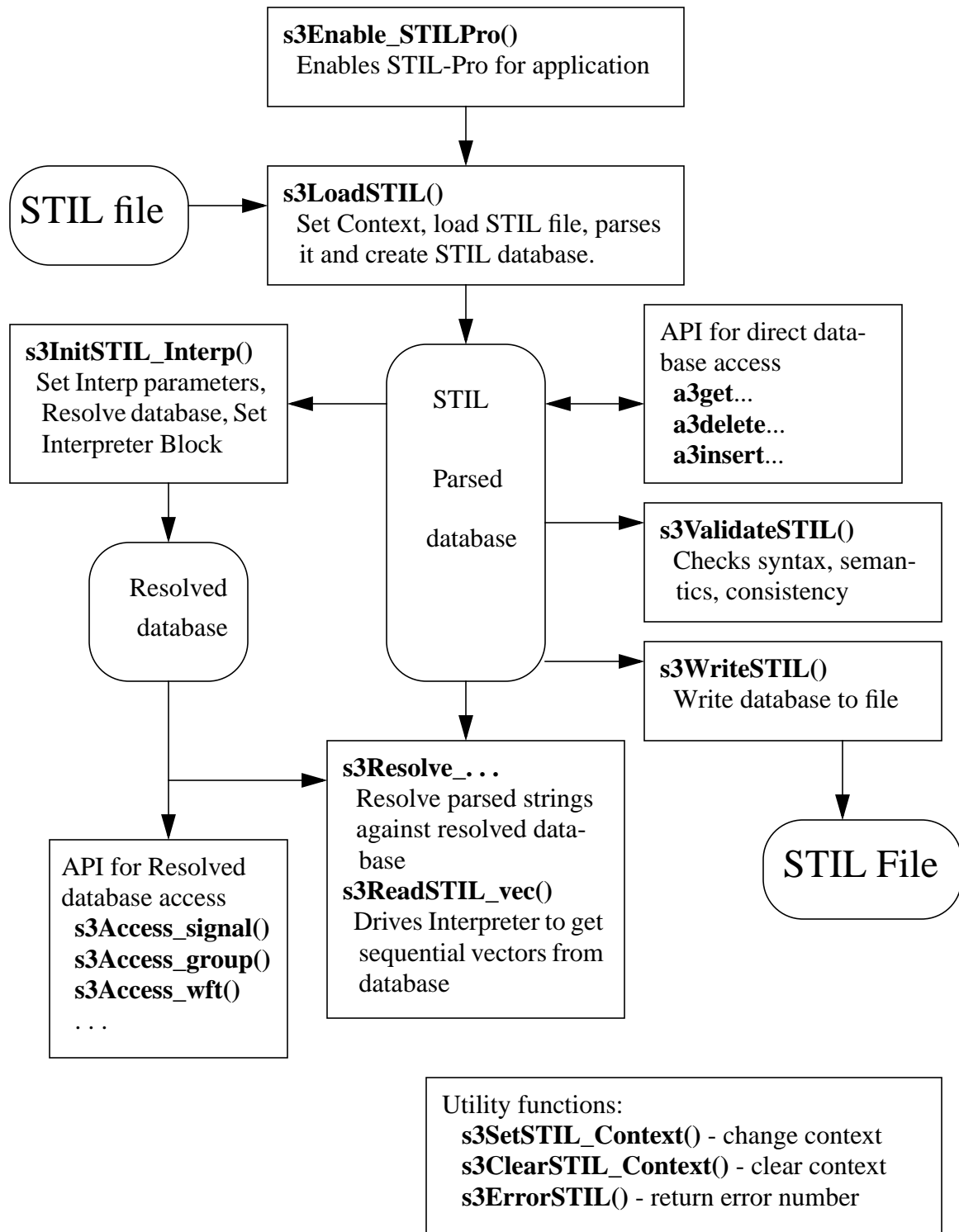
STIL-Pro USER VIEW

The following diagram presents the "client view" of the architecture. The client (i.e., calls to the API functions in the STIL-Pro library) begins a session by using the control functions to establish the object model in memory. A typical session might be as follows:

- 1. s3Enable - initializes the software and does license checks**
- 2. s3LoadSTIL - reads and parses a specified STIL file/stream and results in the "STIL Parsed database" being created.**
- 3. Once the "STIL Parsed data base" has been created, the client program can use the a3 functions to navigate through all the STIL objects and access the STIL data inside each block and statement of the file.**
- 4. The utility functions s3SetSTIL_Context and s3ClearSTIL_context can be used to load multiple STIL file/streams into memory and to switch between them.**
- 5. s3InitSTIL_Interp - establish the conditions for interpretation of the STIL information that is in the selected "STIL Parsed database". Typically this would mean selecting a PatternExec block and selecting the desired interpretation options. At this time, the client program can select options to do things like flattening all Loop and Shift statements, processing Macros and Procedures as in-line sequences, returning cycled data or event data, etc. The interpreted data is maintained in the "Resolved database".**
- 6. Once the "Resolved database" has been created, the client program can use the s3 access functions to walk through the information, according to the selected options.**
- 7. The client program may use the s3InitSTIL_Interp repeatedly to create new databases for different STIL blocks (i.e., patterns, timing, etc.) or to request a different mode of interpretation.**

STIL-Pro

User-View of Architecture



December 12, 2006